

External Hard Drive 外置硬盘驱动器

Operating Instructions / 使用說明書 / 使用说明书 /

사용설명서 / تعليمات التشغيل

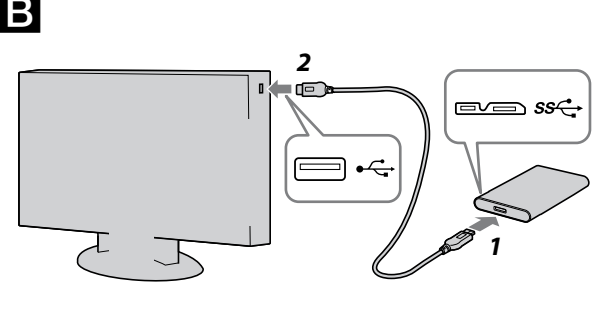
CE

HD-B1/HD-SL1/HD-SL2

© 2015 Sony Corporation

http://www.sony.net/

A



B

English Data recording device

A Using External Hard Drive with a Computer

Connecting this Unit to the Computer

1 Connect the USB cable to the USB jack of this unit.

2 Connect the USB cable to the USB jack of the Computer.

Notes

- Do not connect a wrong USB cable to this unit, which may damage the socket.
- If the power access lamp does not light up, check that the USB cable is connected correctly.

Installing (Mac users only)

The following procedure is only needed when connecting this unit to a computer for the first time.

- There is no need to initialize this device when connecting it to a Windows computer.
- Click [Go] in the menu.
- Click [Utilities] and then [Disk Utility].
- Click [xxx.xxB Sony Hard Drive Media]* and then [Partition].

* The capacity of your external hard drive is shown at "xxx.xxB".

4 Select [1 Partition] in [Volume Scheme].

5 Click [Name], [Format], [Size], [Options...] as needed.

6 Click [Apply].

7 Click [Partition] and wait until initialization is completed.

8 When initialization is completed, the icon appears on the desktop.

Notes

- These operating instructions describe the procedure based on Mac OS X 10.10. The procedure may differ if you have a different Mac OS version. For details, refer to the disk utility help of your Mac OS.
- When you perform the above procedures, all data saved in this unit is deleted. If there is any saved data in this unit, make a backup copy of it as necessary beforehand. If you delete the software for Windows in this unit, you can download it from Sony's website. For details, visit the Support Website.

- HD-B□/HD-SL□ model is initialized in NTFS format when shipped from the factory. If using only with Mac OS, initialize this unit on Mac OS with the above procedure. If using with both Windows and Mac OS, initialize this unit in FAT32 format with the supplied software in Windows (HD-SL□ model only).
- If this unit is initialized in FAT32 format, files of 4 GB or more cannot be saved.

- You may take several seconds after connecting this unit to the computer for this unit to be mounted.

The above procedure is not required from the second time onwards. If you can see the icon of this unit on the screen after connecting to the computer, it means you can use this unit with the computer.

Disconnecting this Unit from the Computer

In this section, we describe the procedure for disconnecting this unit from the computer while the computer is switched on.

Windows users

1 Click  in the notification area at the bottom right of the desktop.

The devices currently connected to the computer appear on the screen.

2 Click on this unit.

3 Wait until the message “Safe to Remove Hardware” appears, and click [OK].

If using Windows 8.1/Windows 8/Windows 7, you do not need to click [OK].

4 Disconnect the USB cable from the computer.

Mac OS users

1 Drag and drop this unit’s icon on the desktop into [Trash].

2 Disconnect the USB cable from the computer.

Installing the supplied software (HD-SL□ model only) (Windows users only)

You need to perform the following procedure to be able to use the supplied software.

1 Double-click [HD-SL□ (model name)] in Computer (Windows 8.1/Windows 8/Windows 7/Windows Vista).

2 Double-click [Sony HDD Utilities] folder.

3 Double-click [Start.exe].

4 Install software according to the instructions on the screen.

Notes

- You need administrative privileges to install the software.
- For Windows Vista users, if you see the message “A program needs your permission to continue.”, click [Continue].
- For Windows 8.1/Windows 8/Windows 7 users, if you see the message “Do you want to allow the following program to make change to this computer?”, click [Yes].

B Using External Hard Drive Connected to Audio-Visual Equipment (HD-SL□ model only)

* Illustration **A** is based on recording of a digital broadcast from TV. If you use with other audio-visual equipment, refer to the operating instructions of your audio-visual equipment.

1 Connect the USB cable to the USB jack of this unit.

2 Connect the USB cable to the USB jack of the audio-visual equipment.

For details on registration with various audio-visual equipment, playing back data and recording data, refer to the operating instructions of your audio-visual equipment. Disconnect this unit from the audio-visual equipment according to the procedure for your audio-visual equipment.

Notes

- For details on connecting, also refer to the operating instructions of your audio-visual equipment.
- The location of the USB jack varies with audio-visual equipment. For details, refer to the operating instructions of your audio-visual equipment.

[HD-SL□ model] This unit is initialized in NTFS format.
[HD-SL□ model]
<ul style="list-style-type: none">To use this unit with audio-visual equipment or with a computer in combination with audio-visual equipment, initialize this unit beforehand with your audio-visual equipment or with the supplied “FAT32 Formatter” software on a computer. To use this unit with a PS3™ (PlayStation® 3) system, initialize this unit beforehand with the supplied “FAT32 Formatter” software on a computer. (For details, refer to the operating instructions of your PS3™ system.)
<ul style="list-style-type: none">To record from audio-visual equipment to this unit, you may need to initialize or register this unit with your audio-visual equipment. Doing so will reformat the unit into the audio-visual equipment’s format so you may not be able use this unit with a computer or other audio-visual equipment.
<p>Caution</p> <p>Initializing or registering this unit will delete ALL data stored on it.</p>

- If you replace the audio-visual equipment or this unit due to a malfunction, you cannot retrieve the data that was saved before replacement.

Notes on Use

This unit is a precision instrument. Saved data may be lost due to sudden failure. As a precaution against possible failure, periodically save the data in this unit elsewhere. Sony will not repair, restore or replicate recorded contents under any circumstances. Furthermore, Sony shall not be responsible for any damage to or loss of recorded data for any cause.

- Power saving functions of the computer such as standby, hibernate, sleep, suspend and resume may not be able to be used.
- Do not install any software in this unit. Some software such as game software may not run properly because the programs executed when starting up the OS cannot be found.
- Note the following when using other USB devices while connecting this unit to equipment.
 - The transfer speed of this unit may become slower.
 - You may be unable to use this unit if it is connected to equipment via a USB hub. If this happens, reconnect this unit directly to the USB port of the equipment.
- Do not connect a wrong USB cable to this unit, which may damage the socket.
- Do not remove this unit from the equipment while writing, reading or deleting data. Do not strike, bend, drop, wet, or apply excessive force to this unit. Doing so may damage the data.
- Our product warranty is limited only to the External Hard Drive itself, when used normally in accordance with these operating instructions and with the accessories that were included with this unit in the specified or recommended system environment. Services provided by the Company, such as user support, are also subject to these restrictions.

Handling this unit

- This unit does not have shock-proof, dust-proof, splash-proof or water-proof specifications.
- Do not use or store this unit in the following locations. Doing so may cause this unit to malfunction.
 - Somewhere extremely hot, cold or humid
 - Never leave this unit exposed to high temperature, such as in direct sunlight, near a heater, or inside an hot car in summer. Doing so may cause this unit to malfunction or become deformed.
 - Locations at low pressure (3,000 m or more above sea-level or 0.5 atmospheres or less)
 - Where there is a strong magnetic field or radiation
 - Locations subject to vibration or loud noise, or on an unstable surface
 - In a badly ventilated place
 - In a dusty or humid place
- Locations at low pressure (3,000 m or more above sea-level or 0.5 atmospheres or less)
 - Where there is a strong magnetic field or radiation
 - Locations subject to vibration or loud noise, or on an unstable surface
 - In a badly ventilated place
 - In a dusty or humid place

High temperature of this unit

While using this unit, the main body of this unit becomes hot. This is not a malfunction. Depending on the operating status, their temperature may rise to 40 °C or higher. Touching them for a long time in this condition may cause a low temperature burn.

Supplied software (HD-SL□ model only)

1 Backup Manager 2: Hybrid automatic backup by using Cloud storage and External Hard Drive.

2 Data Transfer Accelerator: Approx. 2 times faster data transfer to the External Hard Drive.

3 Password Protection Manager: Safeguard your important documents with password protection encryption.

4 FAT32 formatter: External Drive formatter for using with PS3.

* For details, please refer to the document in External Hard Drive (Software Download.html).

- If you create a password protected area with password protection software, this unit cannot be used with equipment other than the computer.
- The effect of the speed-up software differs according to conditions (size or number of files transferred, computer specifications, etc).

Maintenance

- Before maintenance, turn off the power of this unit. If the power plug is connected to the wall outlet, disconnect it.
- Wipe this unit with a soft dry cloth or a well wrung out wet cloth.
- Do not use alcohol, thinner, benzine, etc. These may degrade or damage the surface.
- Using a chemical cleaning cloth on this unit may cause its color to fade or change.
- Using a volatile solvent like an insecticide, or keeping this unit in contact with rubber or vinyl plastic products for a long time may cause deterioration or damage to this unit.
- Do not use a liquid solvent etc. Liquid may get inside this unit and cause it to malfunction.

Specifications

Operating environment

Operating temperature	5 °C to 40 °C (41 °F to 104 °F)
Operating humidity	8% to 90%
Storage temperature	-20 °C to +60 °C (-4 °F to +140 °F)
Storage humidity	8% to 90%

Compatible OS

Windows 8.1 (32 bit/64 bit), Windows 8 (32 bit/64 bit), Windows 7 (32 bit/64 bit), Windows Vista (32 bit/64 bit)
Mac OS X ver.10.8 or later

USB interface

USB 3.0 (compatible with USB 2.0)
Power
DC 5 V USB Bus Power
Power consumption
Max. 4.5 W
File system (factory default)
NTFS
Dimensions (Approx.)
HD-B1: 81 mm × 17 mm × 118 mm (W × H × D, without protrusions)
HD-SL1, HD-SL2: 81 mm × 12 mm × 118 mm (W × H × D, without protrusions)
Mass (Approx.)
HD-B1: 180 g
HD-SL1: 190 g
HD-SL2: 203 g

Design and specifications are subject to change without notice.

Support Website

For more details on this unit, visit the following support site.
http://www.sony.net/hdd/

中文（繁） 資料記錄裝置

A 使用電腦的外接硬碟

將本產品連接至電腦

1 將 USB 傳輸線連接至本產品的 USB 插孔。

2 將 USB 傳輸線連接至電腦的 USB 插孔。

註

- 請勿使用不適當的 USB 傳輸線連接本產品，否則可能導致插槽受損。
- 若電源指示燈沒有亮起，請檢查 USB 傳輸線是否正確連接。

安裝（僅 Mac 使用者適用）

僅於第一次連接本產品與電腦時，才需執行下列步驟。

- 若連接至 Windows 電腦，則不需將本裝置初始化。

1 按一下功能表中的 [前往]。

2 按一下 [工具程式] 並按下 [磁碟工具程式]。

3 按一下 [xxx.xxB Sony Hard Drive Media]✕，然後按下 [分割]。

- 外接硬碟的容量會顯示在“xxx.xxB”。

4 在 [卷宗架構] 中選擇 [1 個分割區]。

5 視需要輸入 [名稱]、[格式]、[大小]、[選項...]。

6 按一下 [套用]。

7 按一下 [分割]，並等待初始化完成。

8 當初始化完成後，圖示會出現在桌面上。

註

- 這些操作指示為說明 Mac OS X 10.10 的步驟，若您使用其他的 Mac OS 版本，步驟可能會有所不同。如需詳細資訊，請參考 Mac OS 的磁碟工具程式說明。
- 當您執行上述步驟時，將會刪除儲存在本產品中的所有資料。若在本產品中儲存任何資料，請事先將所產的資料備份。若您在本產品中刪除 Windows 適用的軟體，您可從 Sony 網站重新下載。如需詳細資訊，請造訪支援網站。
- HD-B□/HD-SL□ 機型於出廠時已採用 NTFS 格式初始化。若您只搭配 Mac OS 使用，請透過上述步驟在 Mac OS 上將本產品初始化。若要同時搭配 Windows 與 Mac OS 使用，請在 Windows 中使用隨附軟體將本產品初始化為 FAT32 格式（限HD-SL□機型）。

- 若以 FAT32 格式初始化產品，可能無法儲存 4 GB 以上的檔案。
- 將本產品連接至電腦後，可能需要花費幾秒才會完成安裝。

第二次或往後連接時，不需執行上述步驟。

當本產品連接至電腦後，若您畫面上看見本產品的圖示，即表示您可以在這台電腦上使用本產品。

中斷本產品與電腦的連線

在本節中，我們將詳述如何在電腦開機時中斷本產品與電腦的連線。

Windows 使用者

1 在桌面右下角的通知區域按一下 。

畫面上會出現目前連接至電腦的裝置。

2 按一下本產品。

3 等待“Safe to Remove Hardware”訊息出現，然後按一下 [OK]。

若是使用 Windows 8.1/Windows 8/Windows 7，您不必按下 [OK]。

4 從電腦解除 USB 傳輸線。

Mac OS 使用者

1 在桌面上將本產品的圖示拖放至 [垃圾桶]。

2 從電腦解除 USB 傳輸線。

安裝支援軟體（限HD-SL□ 機型）（僅 Windows 使用者適用）

您必須執行下列步驟，才能使用隨附軟體。

1 在 Computer (Windows 8.1/Windows 8/Windows 7/ Windows Vista) 中連接兩下 [HD-SL□ (型號)]。

2 連接兩下 [Sony HDD Utilities] 資料夾。

3 連按兩下 [Start.exe]。

註

- 您必須擁有管理權限才能安裝軟體。
- 若為 Windows Vista 使用者，請在看到“A program needs your permission to continue.”訊息時按一下 [Continue]。
- 若為 Windows 8.1/Windows 8/Windows 7 使用者，請在看到“Do you want to allow the following program to make change to this computer?”訊息時按一下 [Yes]。

B 使用和視聽設備相連接的外接硬碟（僅適用HD-SL□ 機型）

* **圖** 為錄製電視數位廣播目的情況。

若您使用其他視聽設備，請參考所用視聽設備的操作說明。

1 將 USB 傳輸線連接至本產品的 USB 插孔。

2 將 USB 傳輸線連接至視聽設備的 USB 插孔。

有關各種視聽設備的註冊資訊、資料的播放及錄製說明，請參考所使用視聽設備的操作手冊。

註

- 有關連線的詳細資訊，另請參考所使用視聽設備的操作說明。
- USB 插孔的位置視您的視聽設備而有不同。如需詳細資訊，請參考所使用視聽設備的操作說明。

[HD-SL□ 機型] 本產品是以 NTFS 格式初始化。
[HD-SL□ 機型]
<ul style="list-style-type: none">若您搭配視聽設備使用本產品，或搭配連接至電腦的視聽設備使用本產品，請事先在您的視聽設備上使用支援軟體 “FAT32 Formatter”，在電腦上將本產品初始化。 當您在 PS3™ (PlayStation® 3) 系統上使用本產品時，請事先使用支援軟體 “FAT32 Formatter” 在電腦上將本產品初始化。（如需詳細資訊，請參考 PS3™ 系統的說明使用書。）
<ul style="list-style-type: none">當使用視聽設備錄製資料至本產品時，您可能需要使用您的視聽設備來初始化或註冊本產品。這將本產品重新格式化為視聽設備的格式，您可能無法搭配電腦或其他視聽設備使用本產品。
<p>注意</p> <p>初始化或註冊本產品將會刪除所有已儲存的資料。</p>

- 如果因為故障而需要更換視聽設備或本產品，可能無法擷取更換前所儲存的資料。

使用須知

本產品為精密裝置。突發性的故障可能導致已儲存的資料遺失。為了預防可能發生的故障，請定期備份本產品的資料。在Any情況下，Sony 皆不會修復、還原或複製已錄製的內容。

此外，Sony 對於任何記錄資料的損壞或遺失概不負責。

- 您可能無法使用電腦的省電功能，例如待機、休眠、暫止及繼續。
- 請勿在本產品或電腦上使用任何軟體、支援軟體（如遊戲軟體）可能無法正常運行。原因是作業系統無法在開機時找到這些軟體。

- 若在本產品與設備連接時使用其他USB裝置，應注意下列事項：
 - 本產品的傳輸速度可能會變慢。
 - 若是透過USB集線器連接至設備，可能無法使用本產品。發生此情況時，請將本產品重新連接至設備的USB埠。
- 請勿使用不適當的USB傳輸線連接本產品，否則可能導致插槽受損。
- 當寫入、讀取或刪除資料時，請勿從設備移除本產品。請勿敲打、彎曲、搖晃、沾濕或對本產品施加重力，否則可能導致資料損毀。
- 產品保固僅適用於外接硬碟本身，且須依據所述操作說明並搭配隨附配件於指定或建議系統環境中正常使用。使用者支援等服務係由本公司提供，亦受前款規定之限制。

產品處置與儲存

- 本產品不具備防震、防塵、防濕或防水功能。
- 請勿在以下場所使用或存放本產品，否則將導致產品故障。
 - 過熱、過冷或潮濕的地方
 - 切勿將本產品放置在高溫的環境中，例如陽光直射處、接近熱源處或夏日密閉的車內。否則可能導致產品故障或變形。

- 低壓處（海拔高度 3000 m 以上或 0.5 大氣壓力以下）
 - 具有強磁場或強輻射的地方
 - 容易發出震動或嘈雜噪音的地方，或不穩固的表面上
 - 通風不良的地方
 - 多塵或潮濕的地方

本產品會產生高溫

使用本產品時，本產品的主機會慢慢變熱。這並非故障。根據操作狀態，溫度可能升至 40 °C 以上。在這種情況下長時間觸碰，可能造成低溫灼傷。

支援軟體（僅適用HD-SL□ 機型）

1 Backup Manager 2: 雲端儲存及外接式硬碟二合一的自動備份軟體。

2 Data Transfer Accelerator: 將外接式硬碟數據傳輸速度提高約兩倍的軟體。

3 Password Protection Manager: 用密碼加密防護文件安全的軟體。

4 FAT32 formatter: 搭配 PS3 將外接式碟格式化的軟體。

- 詳細的說明，請參考外接式硬碟內的文件 (Software Download.html)。

- 若是使用密碼保護軟體建立一個密碼保護區，您可能無法在電腦以外的設備上使用本產品。
- 加速數據的效果，會根據各種情況而有差異（傳輸檔案的大小或數量、電腦規格等）。

維護

- 在進行維護前，請先關閉本產品的電源。若電源插頭連接至電源插座上，請先拔掉插頭。
- 請使用柔軟的乾布或榨乾的溼布來擦拭本產品。
- 請勿使用酒精、稀釋劑、揮發油等用品，否則可能造成表面劣化或受損。
- 在本產品上使用化學清潔布，可能造成顏色或變色。
- 使用鹼鹼劑等揮發性溶劑，或讓本產品長時間接觸到塑膠或乙基基塑膠產品，可能造成本產品劣化或受損。
- 請勿使用液態溶劑等用品，液體可能滲入本產品內部而造成故障。

商標

- Handycam 為 Sony Corporation 的註冊商標。
- PlayStation 為 Sony Computer Entertainment Inc. 的註冊商標。
- PS3 為 Sony Computer Entertainment Inc. 的商標。
- Windows 及 Windows Vista 均為美國 Microsoft Corporation 於美國及其他國家的註冊商標或商標。
- Mac OS 為 Apple Inc. 於美國及其他國家的註冊商標。
- 在操作手冊中使用的其他系統名稱及產品名稱，均為各開發公司的商標或註冊商標。這些操作說明不會顯示™ 及® 標誌。

規格

操作環境

操作溫度	5 °C 至 40 °C
操作濕度	8% 至 90%
儲存溫度	-20 °C 至 +60 °C
儲存濕度	8% 至 90%

相容作業系統

Windows 8.1 (32 位元/64 位元)、Windows 8 (32 位元/64 位元)、Windows 7 (32 位元/64 位元)、Windows Vista (32 位元/64 位元)
Mac OS X 10.8 以上版本

USB 介面

USB 3.0（相容於 USB 2.0）

電源

DC 5 V USB 匯流排供電

耗電量

最大 4.5 W

檔案系統（出廠預設）

尺寸 (約)

HD-B1: 81 mm × 17 mm × 118 mm
（寬 × 高 × 深，不含突出部分）
HD-SL1, HD-SL2: 81 mm × 12 mm × 118 mm
（寬 × 高 × 深，不含突出部分）

質量 (約)

HD-B1: 180 g
HD-SL1: 190 g
HD-SL2: 203 g

設計和規格有所變更時，恕不另行通知。

支援網站

有關本產品的詳細資訊，請造訪下列支援網站。

http://www.sony.net/hdd/

中文（簡） 數據記錄設備

A 通过计算机使用外置硬盘驱动器

将本装置连接到计算机

1 将USB电缆连接到本装置的USB插孔。

2 将USB电缆连接到计算机的USB插孔。

注

- 切勿向本装置上连接错误的USB电缆，否则可能会损坏插孔。
- 如果电源指示灯未亮起，请检查USB电缆是否连接正确。

安装（仅限Mac用户）

只有当初次将本装置连接至计算机时，才需要执行以下操作。

- 连接到Windows计算机时，无需初始化本装置。

1 单击菜单中的 [前往]。

2 单击 [实用工具]，然后单击 [磁盘工具]。

